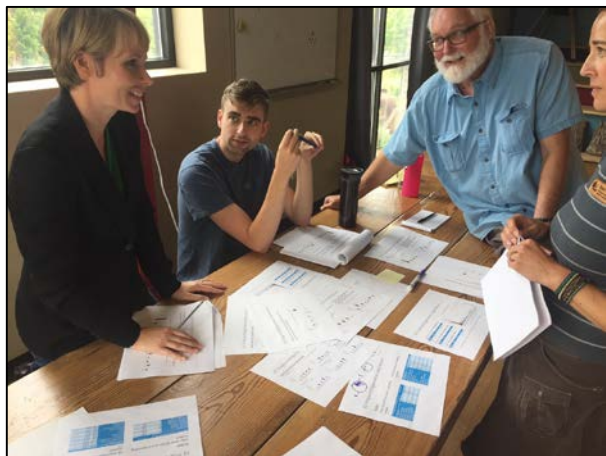


2016 Status & Needs Report of Wisconsin Environmental Education Related Organizations



In the winter of 2015-16 a digital survey was distributed to environmental education organization leaders across the state of Wisconsin. The goal of this survey was to investigate the current status of environmental education (EE) throughout Wisconsin and to help identify the different needs of these organizations in various focus areas. The information that was collected is being used to facilitate communication, collaboration, professional development, and outreach services and to increase the quality and quantity of EE in Wisconsin. A select summary of significant survey results are illustrated here. This survey was supported in part by a Capacity Building grant from the North American Association for Environmental Education.

General EE Organization Information and Trends

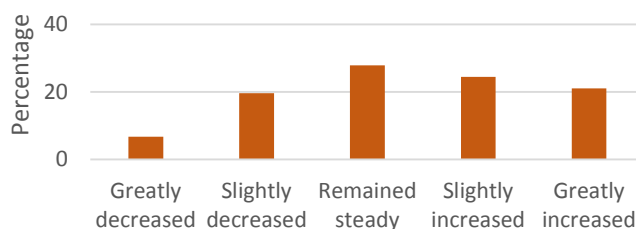
In total **156 EE organizations responded** to the survey including:

- 23 Camps
- 20 K-12 School Programs or Groups
- 18 State-Run Parks, Programs, or Groups
- 13 University-Run Programs or Groups
- 11 City/County-Run Programs or Groups
- 7 Friends Groups
- 6 Watershed Groups
- 7 Museums/Zoos/Aquariums

Survey participants were asked to describe their organization in a number of ways. Questions ranged from whether the organization **correlates school program to academic standards** (69.6% Yes), if they considered their location an **outdoor tourist destination** (49.6% Yes) and if they **regularly partner with other nearby EE organizations** (86.3% Yes). Data on reported participation rate changes and visitor age distribution are also given below.

Age Group	Average % (±SD)
Early Childhood	7.3% (±10.2)
Elementary	35.7% (±24.0)
Middle School	17.3% (±14.9)
High School	9.1% (±11.3)
College	5.9% (±9.0)
Adult	16.9% (±16.8)
Senior Citizens	7.8% (±12.5)

Reported Change in Participation Rates – Last 5 Years



Industry, Economics, and Jobs

Total value of last year's operating budget.

Total Annual Operating Budget	%
\$0 - \$100,000	41.4%
\$100,000 - \$250,000	8.1%
\$250,000 - \$500,000	19.8%
\$500,000 - \$1,000,000	14.4%
\$1,000,000 - \$1,225,000	4.5%
\$1,225,000 - \$1,500,000	1.8%
\$1,500,000 or more	9.9%

Percentage of EE organization funding sources.

Funding Source	Average % (±SD)
Program Revenue	26.0% (±32.8)
State Government Funds	17.5% (±33.8)
County/Local Government	11.4% (±27.4)
Memberships	9.1% (±21.5)
Private Donors	8.5% (±16.3)
Grants	7.6% (±14.1)
Other Sources	20.0% (±12.9)

Land Management

73.5% of organizations **own or manage land** resources

The median property size is **237 acres**, although 24% of those properties are under 50 acres

90.4% of organizations have engaged in **land management or improvement projects** in the last year

Most common land management projects:

- Invasive species management (68.7%)
- Trail maintenance (38.6%)
- Land restoration (30.1%)

- Tree planting (26.5%)
- Controlled burning (21.7%)

69.3% of organizations **conduct ecological research** or other data gathering on-site

Most common research, monitoring, or data collection topics:

- Bird community surveys or banding (21.3%)
- Research partnerships (14.7%)
- Bluebird nest boxes/surveys (13.3%)
- Wetland/lake/river monitoring (13.3%)
- Citizen science programs (12.0%)

Inclusion and Accessibility

“Do you consider your _____ accessible to visitors with disabilities?”	Yes	No	Somewhat
Facility	40.2%	1%	58.8%
Programs	34%	0%	66%



Most common areas of **training on working with people with disabilities provided to EE organization staff:**

- How to encourage communication and interaction between all participants (64.5%)
- Learning disabilities such as ADHD (62.9%)
- Physical disabilities (59.7%)
- Intellectual disabilities (53.2%)
- Non-verbal communication techniques (51.6%)
- How to prevent and manage disruptive behaviors (50%)

Professional Development Needs and Offerings

Survey participants were asked in which subject areas their staff would most benefit from additional training. Shown here are the most common responses and their frequency of response.

EE Subject Areas where staff could “**Benefit from Training In**”

- Technology Use in Outdoor Education (67.3%)
- Using STEM as a Context for EE (or E-STEM) (61.4%)
- Community-based Learning (49.5%)
- Understanding School Initiatives, Speaking School Language (45.5%)
- Birds (42.6%)

- Plants (41.6%)
- Community Action/Service-Learning (41.6%)

Organization Skills Areas where staff could “**Benefit from Training In**”

- Accessibility and Inclusion of People with Disabilities (67%)
- Grant Writing (53.2%)
- Fundraising (51.1%)
- Digital Presence/Facebook/Twitter/etc. (46.8%)
- Volunteer Management (46.8%)
- Exhibit Development (43.6%)
- Public Relations/Marketing (41.5%)



Dr. Justin Hougham justin.hougham@ces.uwex.edu
 Dr. Steve Kerlin skerlin@stroudcenter.org
 Dr. Kendra Liddicoat kendra.liddicoat@uwsp.edu